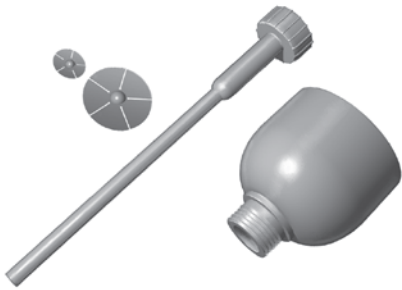
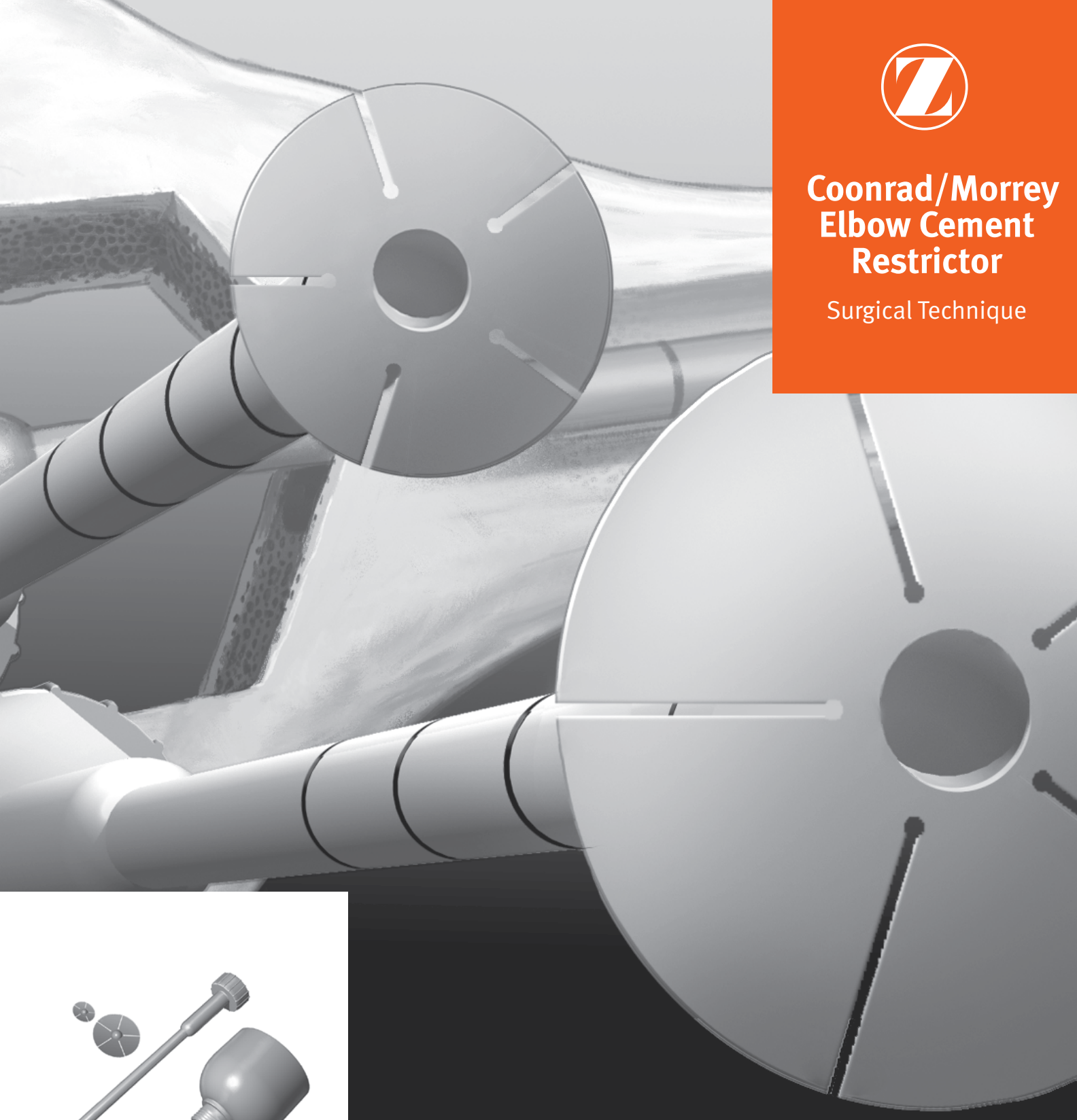




Coonrad/Morrey Elbow Cement Restrictor

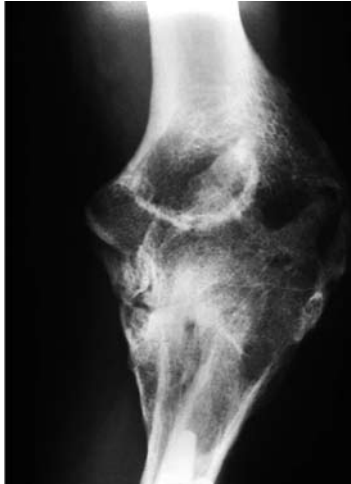
Surgical Technique



Offers accurate insertion

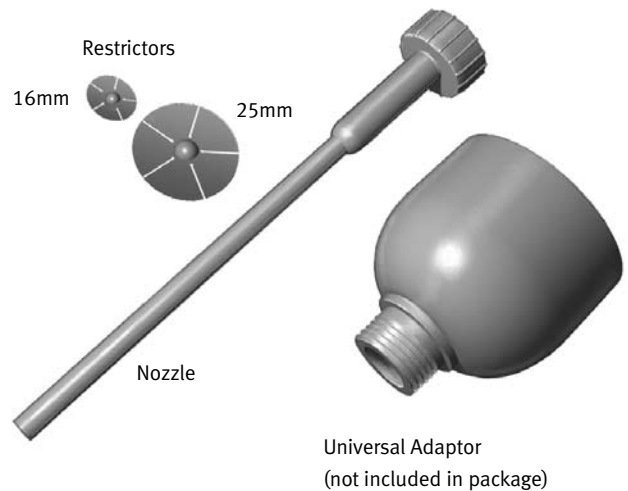
1 Verify Humeral Canal Size

Verify humeral canal size via preoperative radiographs, allowing for 10 percent magnification. Experience has shown that the true diameter may be somewhat smaller than the radiological measurement indicates because of irregularities in endosteal architecture. It is recommended that the Coonrad/Morrey Elbow Cement Restrictor selected be at least 6mm larger in diameter than the placement location within the prepared canal.



2 Open Cement Restrictor Package

Open the package containing two Cement Restrictors, 16mm and 25mm in diameter, and one Cement Nozzle.



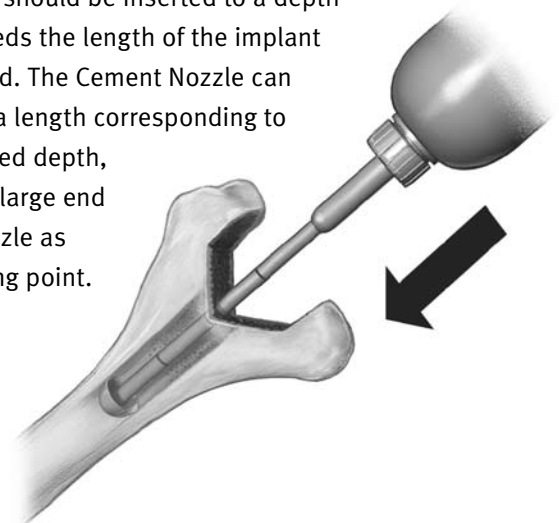
5 Prepare Cement Restrictor

Insert the Cement Restrictor into the open end of the Cement Nozzle.



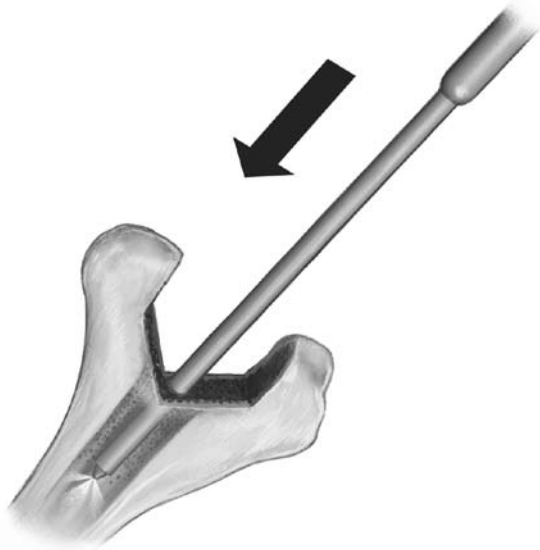
6 Cement Delivery

Insert the restrictor and nozzle into the humeral canal to the desired depth. The nozzle is marked at 1-inch increments to reference the desired depth. The Cement Restrictor should be inserted to a depth that exceeds the length of the implant being used. The Cement Nozzle can be cut to a length corresponding to the required depth, using the large end of the nozzle as the starting point.



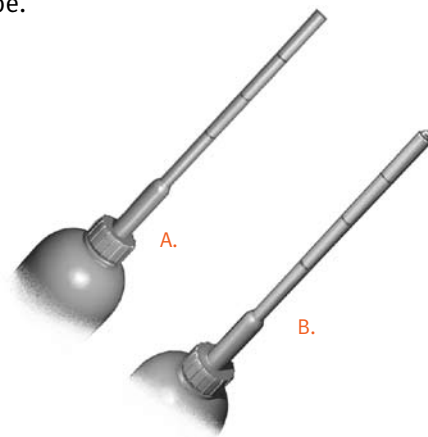
3 Prepare the Humerus

Prepare the humerus by rinsing the canal with pulsatile lavage and drying.



4 Prepare the Cement Nozzle

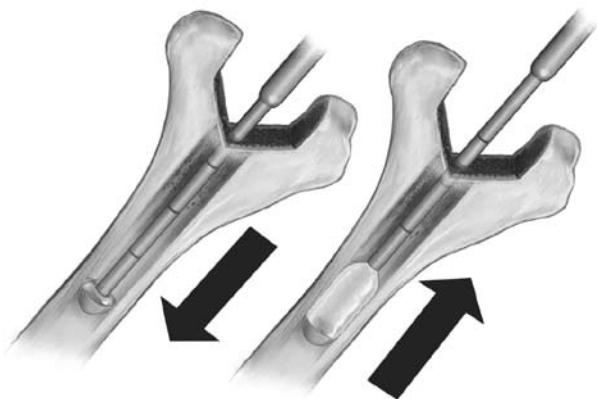
Attach the Cement Nozzle provided with the Cement Restrictors to the cement cartridge, or cement cartridge Universal Adaptor, after low viscosity bone cement has been inserted into the cartridge. **A**—Turn the Cement Nozzle upside down and extrude the bone cement into the nozzle so that air is evacuated from the nozzle. **B**—Avoid extruding the cement completely out of the tube.



7 Deploy Cement Restrictor

Deploy the restrictor by extruding low viscosity cement into the canal and immediately withdrawing the nozzle in retrograde fashion to avoid inclusions of air, blood or saline.

Note: The Restrictor is not intended to pressurize the cement. Pressurization of the cement will move the Cement Restrictor deeper into the canal, thus lengthening the cement column.



8 Insert Humeral Prosthesis

Insert the humeral prosthesis into the canal following the instructions in the surgical technique provided by the manufacturer.



Restrict Bone Cement Travel

Designed for use in primary or revision surgeries, the Coonrad/Morrey Elbow Cement Restrictor reduces bone cement travel into the humeral head during Total Elbow Arthroplasty implant cementing.

The Cement Restrictor delivery and deployment technique is easy to use during the cementing process.

Features

The Coonrad/Morrey Elbow Cement Restrictor:

- Is offered in two sizes, 16mm and 25mm diameters, to complement bone sizes
- Offers accurate insertion, controlled by the surgeon
- Is deployed with easy-to-use instruments, including an incrementally marked Cement Nozzle

Please refer to package insert for complete product information, including contraindications, warnings, precautions, and adverse effects.



Contact your Zimmer representative or visit us at www.zimmer.com

Ordering Information

Prod. No.	Description
32-8105-038-00	Coonrad/Morrey Elbow Cement Restrictor w/ Nozzle
32-8106-043-00	Universal Adaptor

