

Case Study 2 – Conclusions



Case study 2 postoperative x-ray

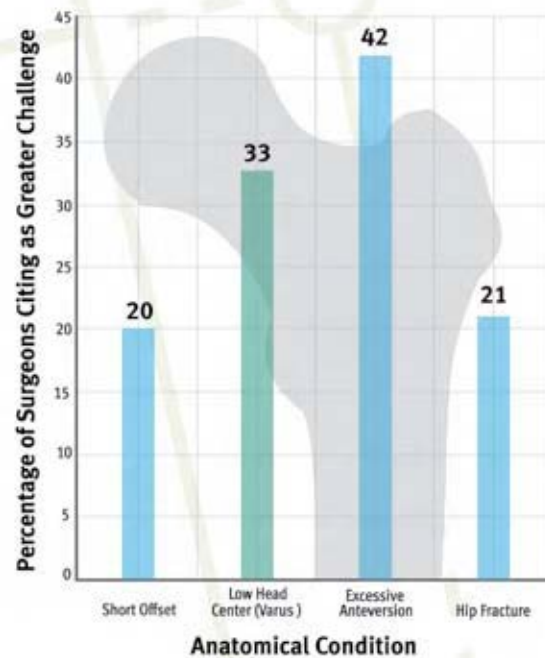
Summary

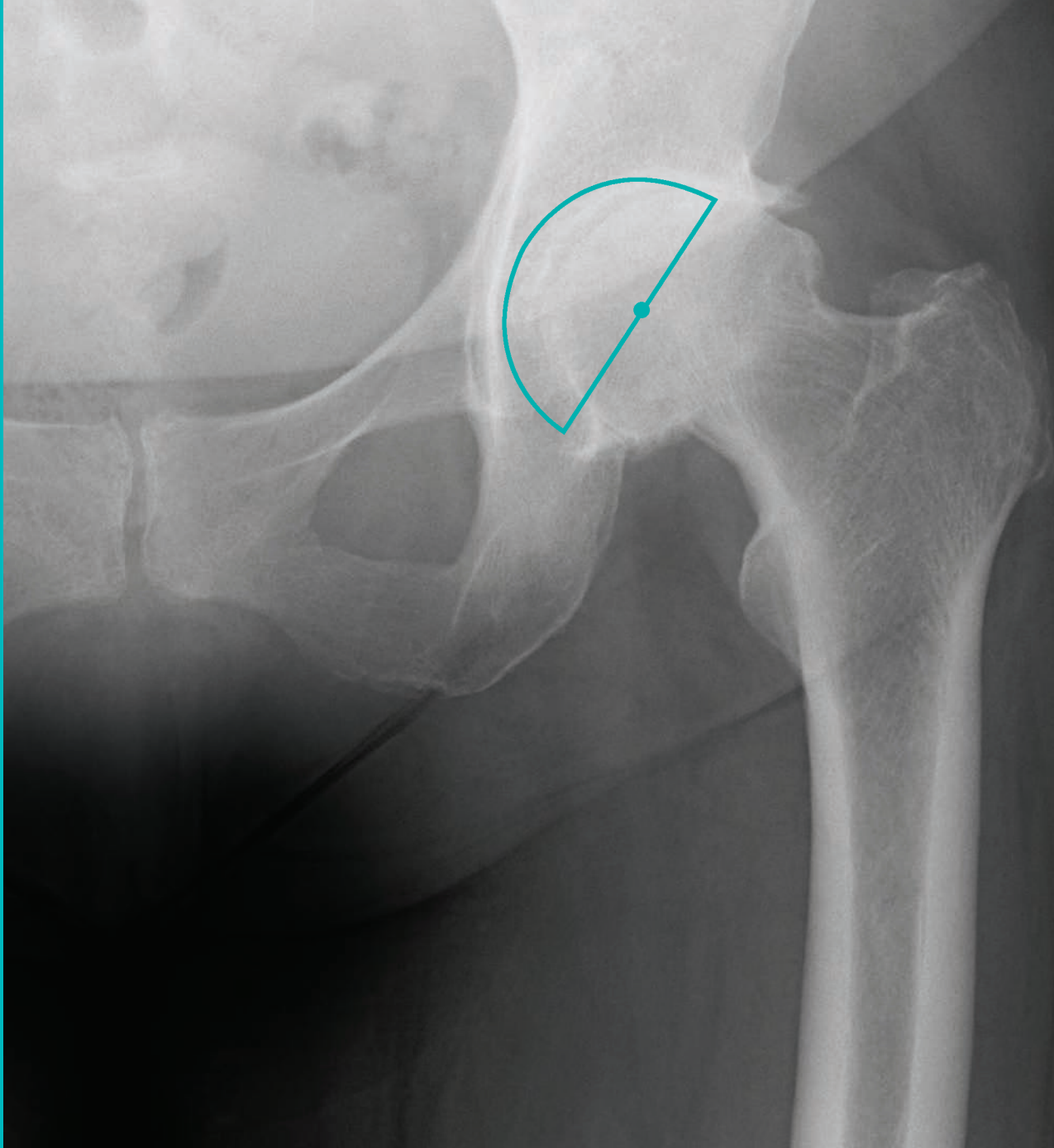
- Varus neck and small femoral anatomy
- Implant -4 leg length/Extra extended offset (X neck) to optimize offset without increasing leg length

Conclusion

- Broad range of head centers allows surgeon to efficiently reconstruct hip kinematics in challenging anatomical situations

Surgeon Survey

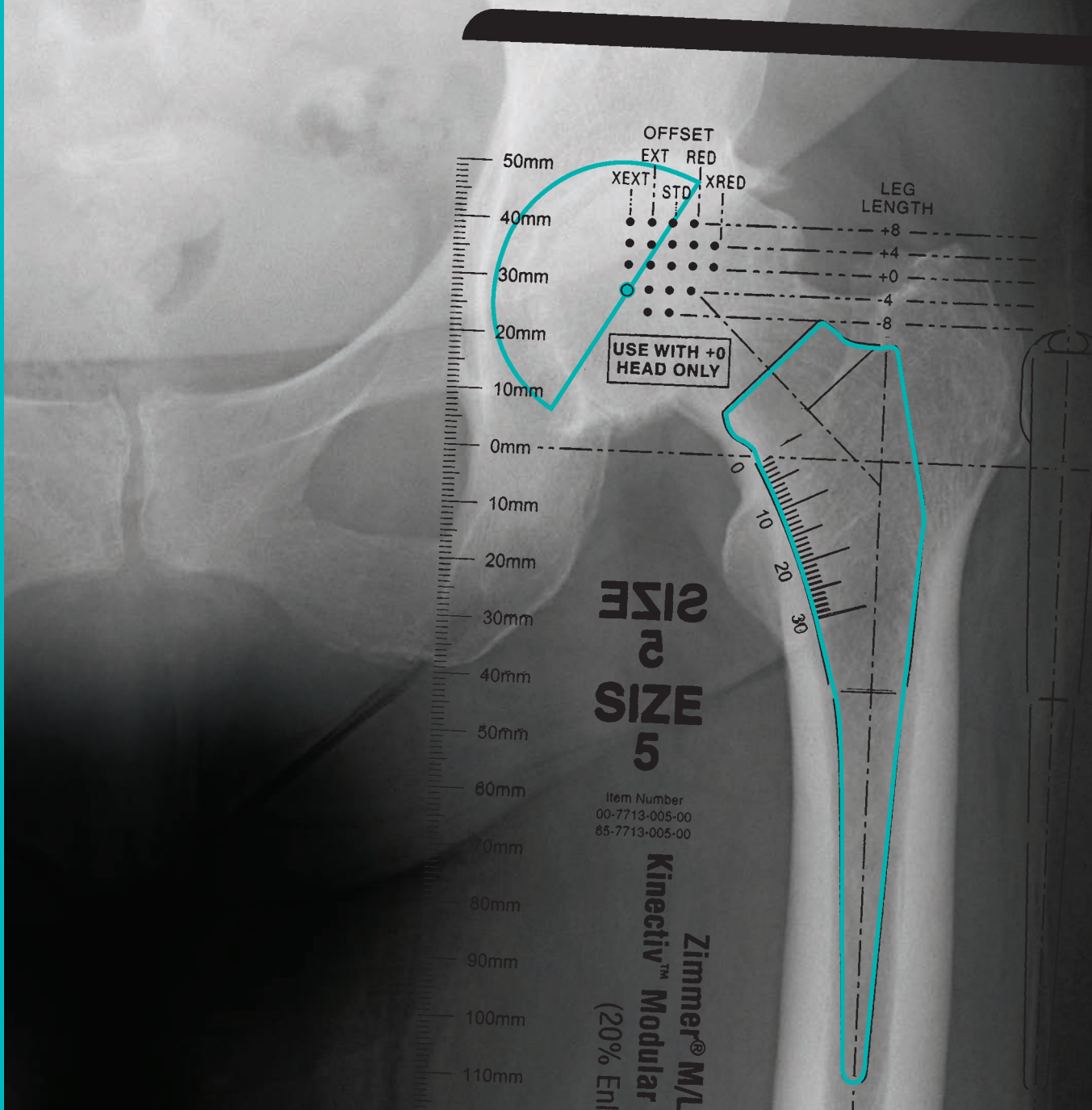


**Varus Neck****Clinical Information**

Age	73
Gender	Female
Preoperative Diagnosis	Osteoarthritis
Operative Side	Left
Procedure	MIS Anterior Supine

Implant Information

Acetabular Cup (Size)	<i>Trabecular Metal™</i> Modular Acetabular Cup (50mm)
Femoral Implant (Size)	
Femoral Head Implant	
<i>Kinectiv</i> Neck	

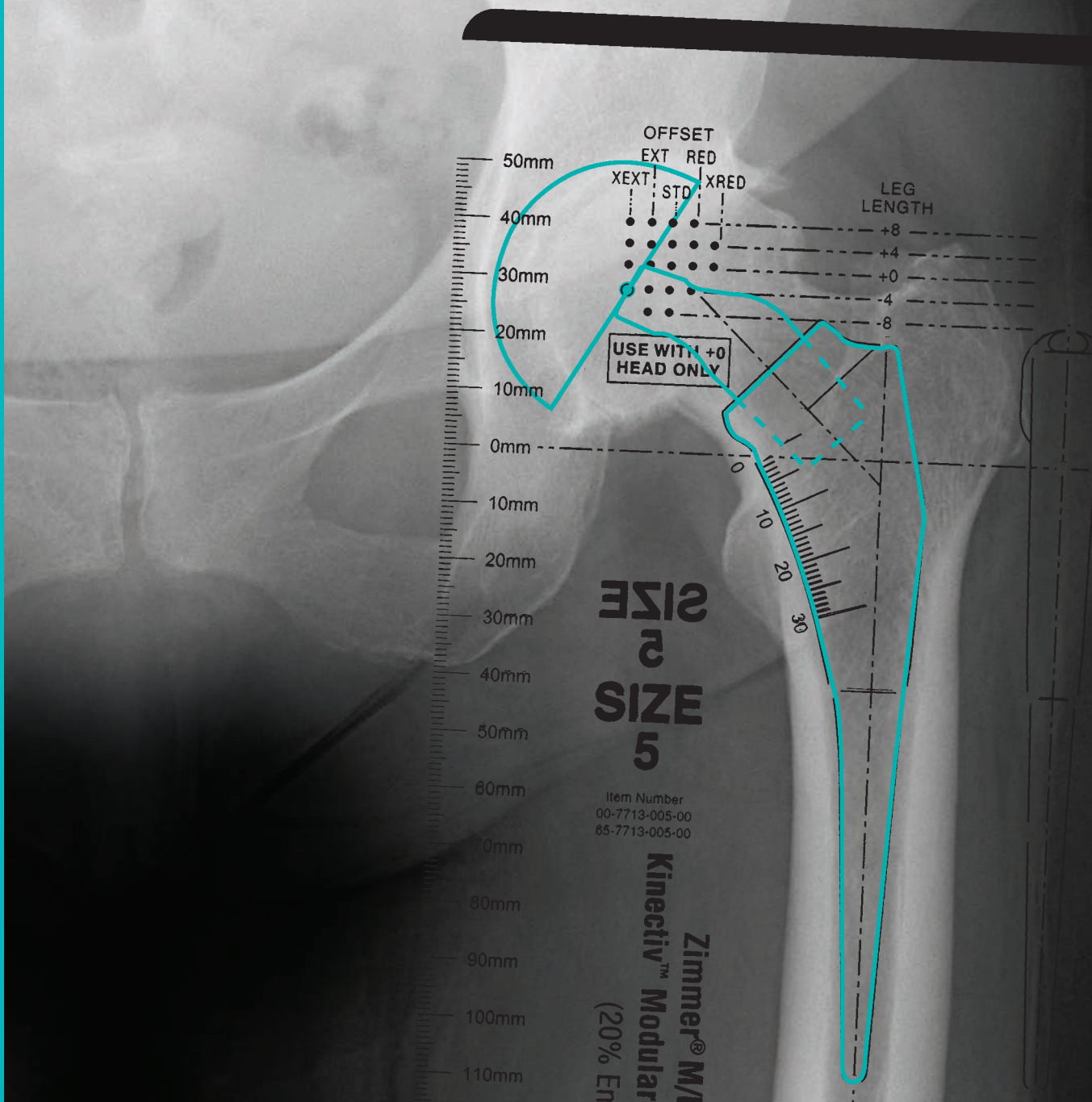


Varus Neck

Clinical Information	
Age	73
Gender	Female
Preoperative Diagnosis	Osteoarthritis
Operative Side	Left
Procedure	MIS Anterior Supine

Implant Information

Acetabular Cup (Size)	Trabecular Metal™ Modular Acetabular Cup (50mm)
Femoral Implant (Size)	M/L Taper with Kinectiv Technology (Size 5)
Femoral Head Implant	
Kinectiv Neck	



Varus Neck

Clinical Information	
Age	73
Gender	Female
Preoperative Diagnosis	Osteoarthritis
Operative Side	Left
Procedure	MIS Anterior Supine

Implant Information

Acetabular Cup (Size)	Trabecular Metal™ Modular Acetabular Cup (50mm)
Femoral Implant (Size)	M/L Taper with Kinectiv Technology (Size 5)
Femoral Head Implant	Ceramic Femoral Head 32mm, +0
Kinectiv Neck	-4 Leg Length/Extra Extended Offset (X neck)